

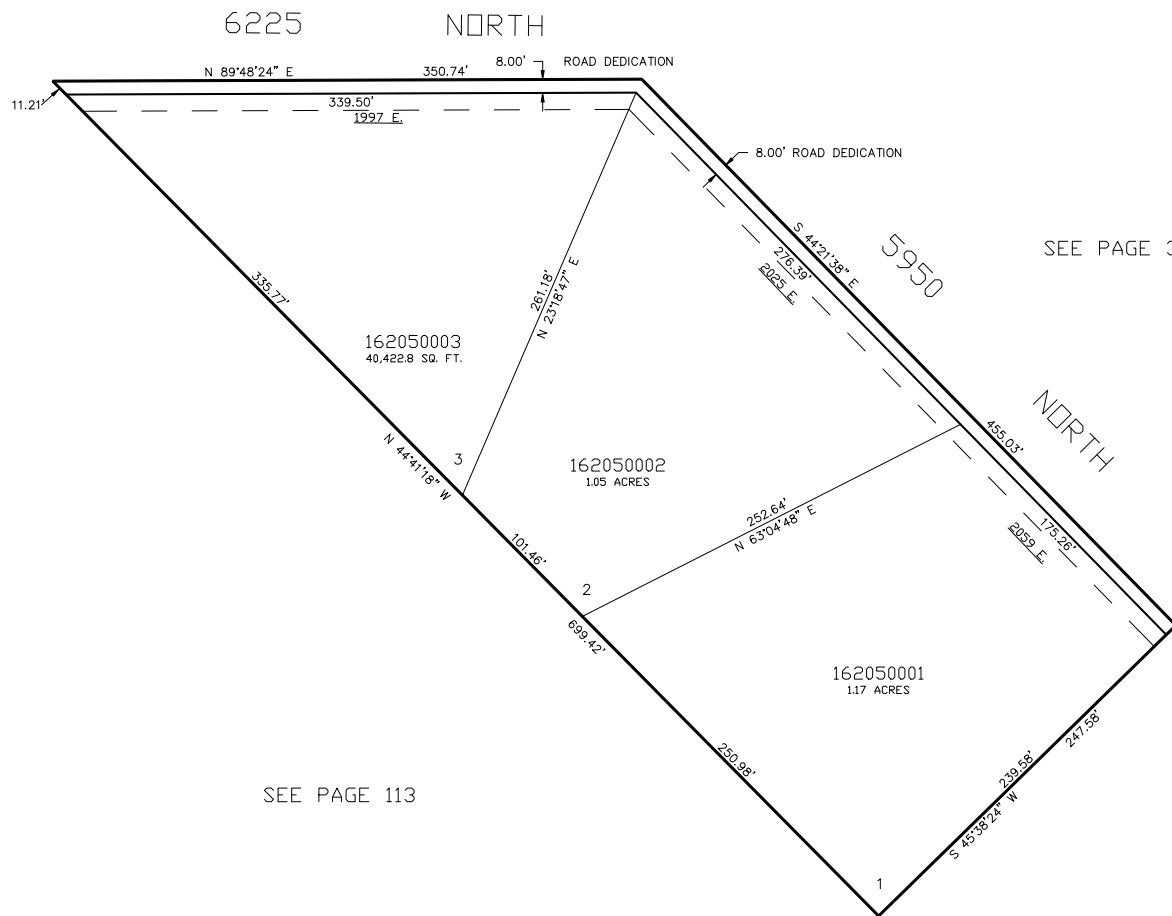
PART OF THE S.E.1/4, OF SEC. 1, T.7N., R.1W., S.L.B. & M.  
LINFORD HILLS SUBDIVISION

205

TAXING UNIT: 318

WEBER COUNTY  
SCALE 1" = 60'

SEE PAGE 3



FOR COMPLETE ENG DATA SEE  
ORIGINAL DEDICATION PLAT IN  
BOOK 45, PAGE 90 OF RECORDS.

10' UTILITY & DRAINAGE EASEMENTS EACH  
SIDE OF PROPERTY LINES AS INDICATED  
BY DASHED LINES EXCEPT AS OTHERWISE  
SHOWN.